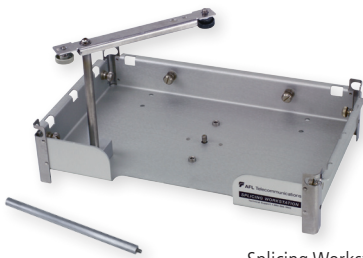




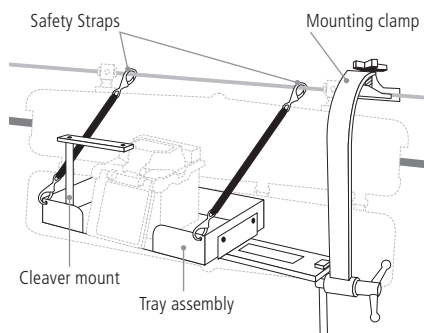
Pole Mount



Splicing Workstation



Aerial mounting system



Aerial Mounting System

**Illustration for reference only.*

ASW-02 Splicing Workstation

The ASW-02 Splicing Workstation can be used with a fusion splicer and cleaver in aerial or terrestrial splicing applications. The ASW-02 provides a stable work surface and secure mounting of the splicer and cleaver to prevent accidental drops and equipment damage in challenging splicing locations.

The ASW-02 Splicing Workstation consists of the work tray, a convenient pivoting cleaver mounting arm, a post for attachment to bucket or ladder mounting accessories, a tripod mount, and dual safety straps. An aerial mounting system is available for direct attachment of the workstation to a telephone pole, or for suspending the workstation from an aerial cable strand. The strand mounting system is fully adjustable to provide for optimal location of the workstation when minimal slack fiber is available, such as in a taut-sheath cable access scenario.

In the aerial environment, the safety straps may be secured to the cable strand to provide security and aid with workstation position adjustment. The safety straps are also used to secure the workstation to the pole, and may be used to raise or lower the workstation.

Features

- Provides direct to pole mounting as well as direct adjustable attachment to aerial strand
- Mounting post provided for attachment to bucket and ladder mounting accessories (utilizing any popular copper splicer-head mounting rigs)
- Tripod mount allows for placement in tight FTTH splicing applications
- Includes cable tie locations to secure cables during splicing
- Optimized to simplify taut sheath splicing applications
- Cleaver mount securely captures cleaver and allows operator to rotate it in and out of the workspace as needed
- Matte finish minimizes glare

Ordering Information

DESCRIPTION	AFL NO.
ASW-02 Splicing Workstation (Full kit with aerial mounting system) Use for FSM-17S, FSM-18S, FSM-50S, FSM-60S, FSM-17R, FSM-18R, FSM-50R and FSM-60R splicers. Includes aerial mounting system to provide strand and pole mounting capability, a post for attachment to bucket or ladder mount accessories, a receptacle for tripod mounting and safety straps.	SO10532
ASW-02 Splicing Workstation (Without aerial mounting system) Use for FSM-17S, FSM-18S, FSM-50S, FSM-60S, FSM-17R, FSM-18R, FSM-50R and FSM-60R splicers. Includes a post for attachment to bucket or ladder mount accessories and a receptacle for tripod mounting.	SO13620